

Description

JK Flexseal® has been introduced in the UK to provide a “ready to go” surface after the JK floor heating system has been installed. The JK Flexseal® is an elastic mortar (class C2TE & S1) that binds hydraulically. It is trowelled over the finished JK floor heating installation leaving the JK pipework securely embedded into the milled channels, protecting them, and allowing other trades to continue on-site, minimising the risk of damage to the pipework.

JK Flexseal® is in direct contact with the pipework and can also improve the uniformity of heat transfer by minimising air voids present above the pipework.

JK Flexseal® is not a levelling compound. It is applied with a 2mm notched trowel. The application will leave 2mm ridges across the entire floor surface area. This provides an ideal keyed surface to bond to. Please note that there may be areas with taller/thicker ridges due to hand application, as is normal with this type of product. Any minor ridges that are too high for the next application can easily be knocked down with a floor scraper by the following trade prior to the application of their product. The JK engineer will do their best to minimise tall spots – if the tolerance for tall spots is minimal, please contact your local operations manager to discuss options.

It will be possible to walk upon the JK Flexseal® 24 hours after application, at which point you can apply any adhesives, renovation screeds, tanking solutions etc. over the JK Flexseal®, in line with the supplier’s instructions.

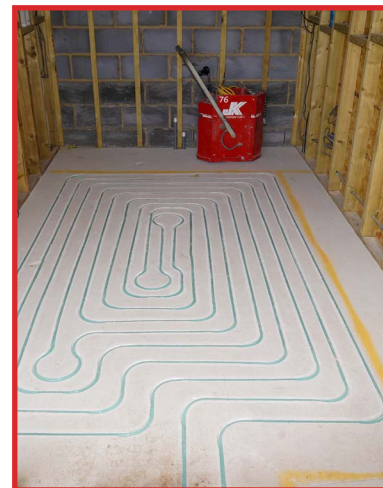
Floor preparation

Prior to JK’s arrival on site, the floor should be prepared for milling and sealing.

The subfloor should be clean, dry, load-bearing and free of cracks, dust and oily substances. Gypsum-like surfaces may contain up to 2% moisture. Concrete should be at least 3 months old and cement screeds at least 5 weeks before JK Flexseal® can be applied.

Slight unevenness in the floor is acceptable, but gouges and large dips/divots should be primed and filled using appropriate material to provide a smooth surface for milling.

Subfloors that need to breathe, such as limecrete, are not suitable for JK Flexseal® application as it is a non-vapour-permeable product. JK Primer+ is available for non porous surfaces such as tile/ceramic/concrete. JK Primer+ is not suitable for PE coatings such as painted warehouse floors. PE coatings should be sanded off prior to application.



Bitumen

Bituminous products should be removed from the subfloor, as should any loose adhesives/tiles etc, as this will affect the adhesion of the new floor preparation and finishing layers. JK Flexseal® cannot be used over bituminous products.

Please consider that if you are removing bituminous products, you may be removing a DPM layer, proper precautions should be taken to ensure that the DPM layer is reinstated. Liquid DPM products can be applied 24hrs after JK Flexseal® has been applied.

You should always talk to an expert to make sure the products you are using are suitable.

Companies specialising in waterproofing include, but are not limited to: Vandex, Tilemaster, Sika and Wycamol.

Anhydrite

Anhydrite screeds may require sanding to remove laitance before any adhesive can be applied, it is best to check with the supplier regarding what preparation work needs to be done, as this cannot be completed once the floor has been milled.

Applying Floor Finishes

JK Flexseal® is designed to be as versatile as possible, and as such there is no need to use “approved products” on top of the JK Flexseal® product – talk to your flooring installer/supplier for advice on what they would typically use with this sort of product and check suitability for use with UFH.

Tiles and/or separation membranes can be applied directly over JK Flexseal®. “Soft” finishes such as carpets and LVT will require a self-levelling compound to be applied to create a smooth surface before installing intermediate materials and the final floor finish.

For all floor finishes, you will either be adhering straight to the JK Flexseal® with an adhesive, or going straight over with a levelling compound, before applying your final floor finish.

We do not recommend floating any floor finishes directly on top of JK Flexseal®.

You will need to ensure the surface is free of dust and debris as you normally would before using any products on top of the JK Flexseal®, especially if it has been left exposed for a prolonged period with other trades working in the room.

We would recommend brushing or vacuuming the surface with a brush head attachment to minimise damage to the JK Flexseal®.

Alternatively, the supplier of the adhesive/leveller may allow you to use a primer to bond any loose dust to the JK Flexseal®, removing larger bits of debris.

Tiling

Once the JK Flexseal® is bonded, cured and appropriately prepared, the chosen primer and tile adhesive can be applied directly on top of the Flexseal® to manufacturer specifications.

The tiler should make sure they are using appropriate adhesive and grout that is suitable for use with underfloor heating. Typically, flexible adhesives and grout are utilised.

Levelling

If using a self-levelling compound (sometimes called renovation screed), this should be applied at a minimum thickness of 5mm and up to a maximum of 10mm. You should always check with the compound supplier, as well as the flooring manufacturer for guidance on the appropriate thickness.

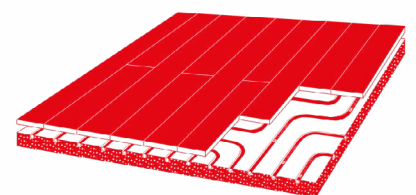
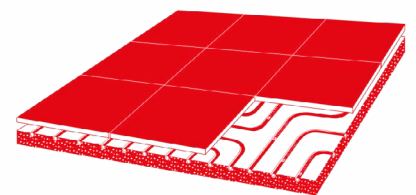
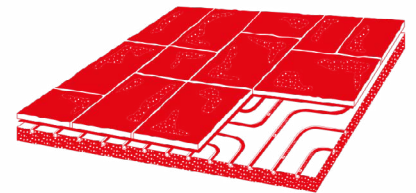
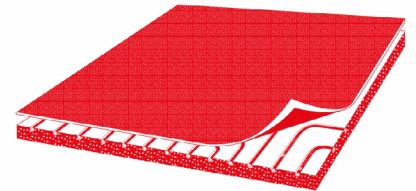
Once the floor has been levelled, the final floor finish can be applied in line with the manufacturer’s instructions for underfloor heating.

You should use a self-leveller if JK Flexseal® has been used and you want to lay any of the following:

- LVT (minimum of 5mm self-leveller recommended)
- Laminate
- Vinyl / Linoleum
- Carpet / Carpet tile
- Wood (including parquet and herringbone)
- Resins
- Microcement.

The above is a non-exhaustive list.

For more information on using Microcement on top of JK Flexseal®, we would recommend speaking with a specialist installation company. For a full list of specialist installation companies please visit our [JK Partners list](#) for companies who work in your area and for a full list of approved products, please visit our [Products](#) page.



Scan for terms & conditions